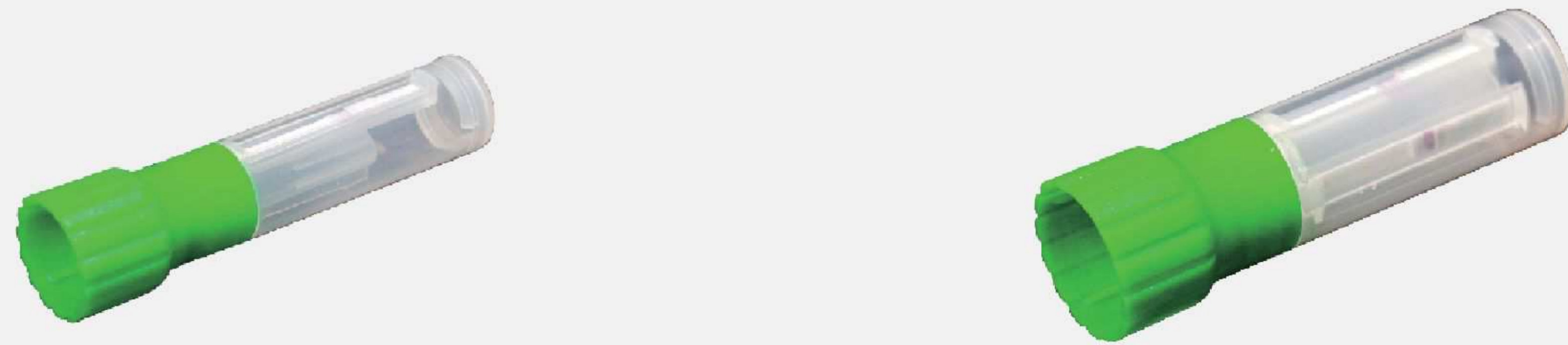


LYHER[®]



Home Care Series

Inspired by the market needs for home use diagnostic which demand symptom oriented, safely disposable and convenient to use, we developed this patented all-in-tube. This device can be customized and designed with different parameters which uses the same test sample. It is an extendible platform which gives us countless possibilities for future use.



We do care you health



Respiratory Tube

Gastric Tube

STD Tube

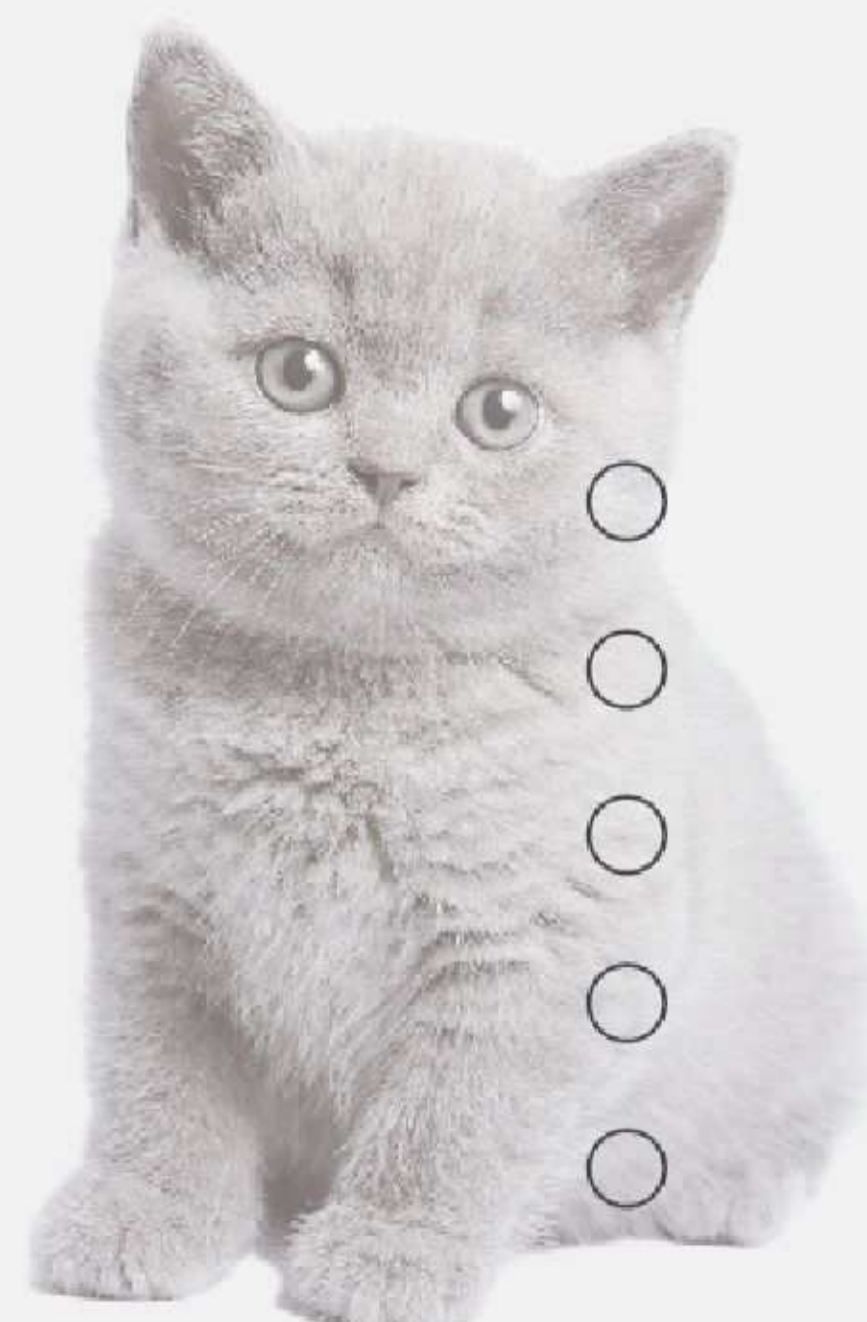
Covid-19 antigen test
 FluA antigen test
 FluB antigen test
 RSV antigen test
 Adeno antigen test

Helicobacter Pylori antigen test
 FOB antigen test

Chlamydia Trachomatis antigen test
 Neisseria gonorrhoeae antigen test

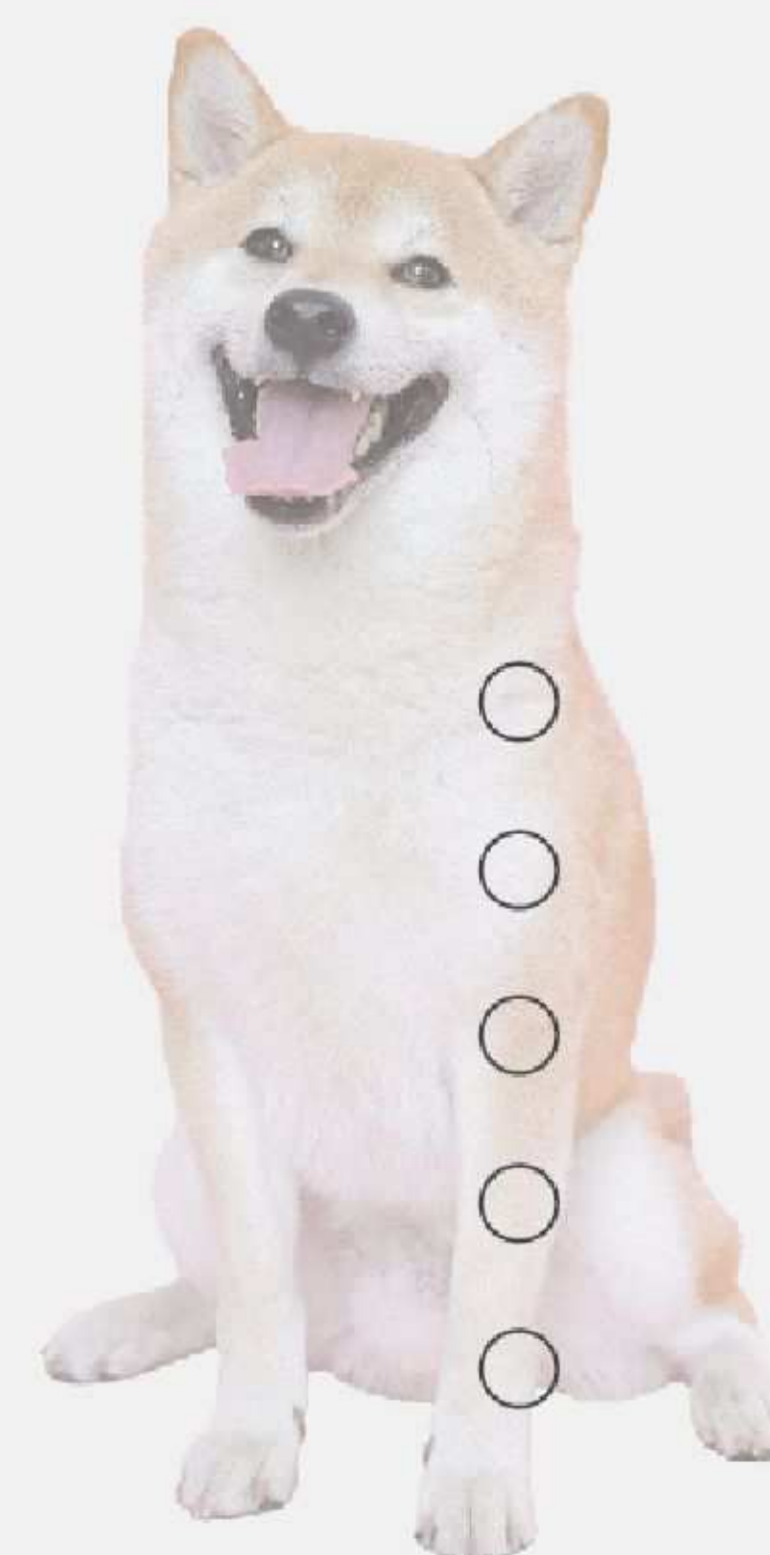
We do care your lovely pets

Kitty tube



- FPV
- FCOV
- FHV
- FCV
- Giardiasis

Puppy tube



- CDV
- CPV
- CIVdie
- Rabies
- Giardiasis

NEW

We do care your baby

Pregnancy digital pen



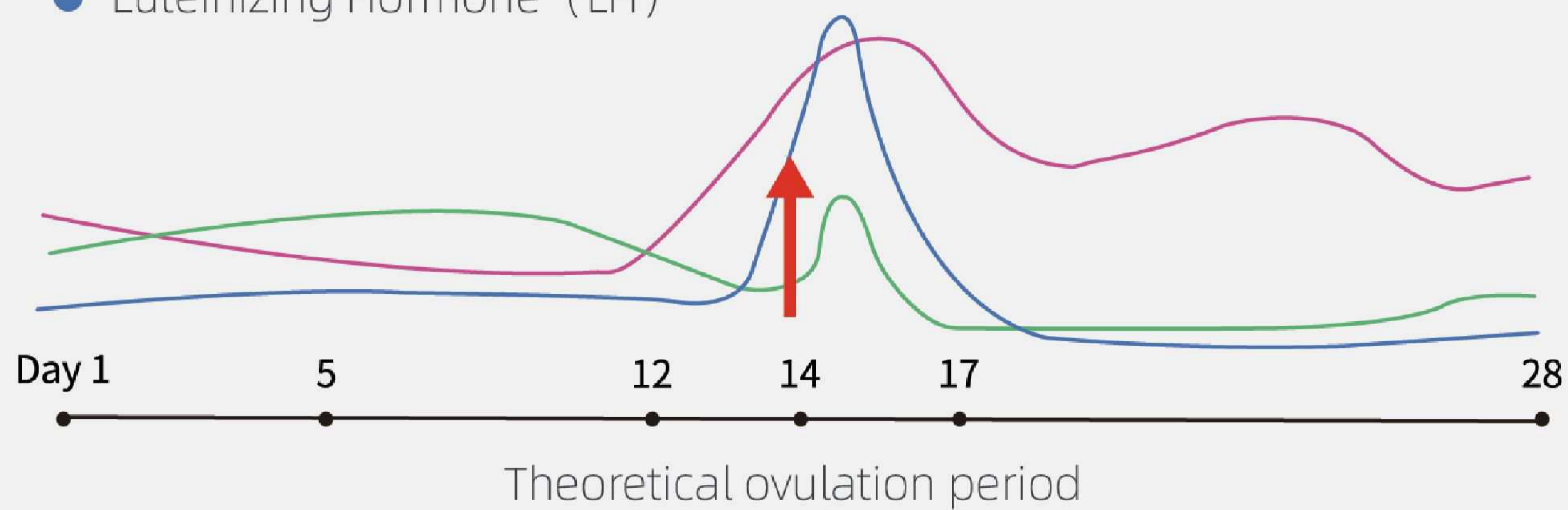
With clear indication from the LED screen, you can read the result of pregnancy or not pregnancy without any difficulty.

Ovulation LH monitor kit

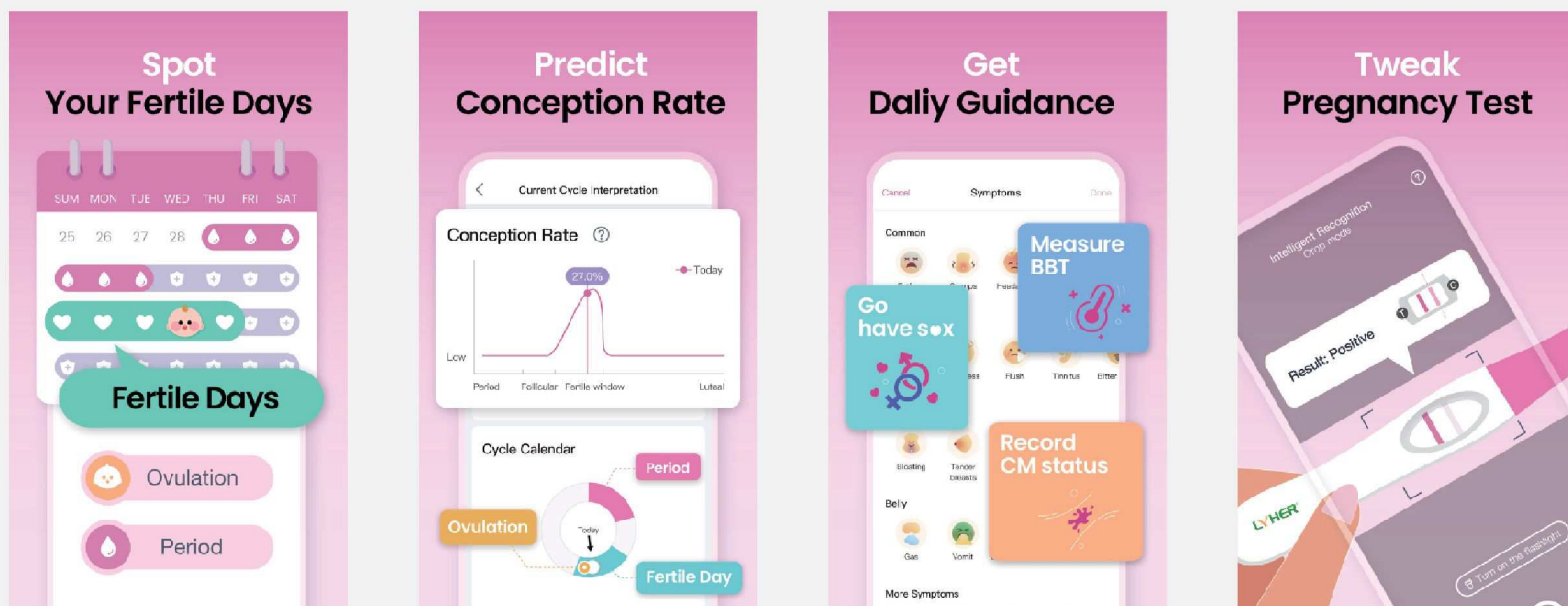


LH levels rise and fall, based on where you are in your menstrual cycle. LH “surges” and is at its highest point just before ovulation occurs. After ovulation, LH helps the body get ready for a potential pregnancy, by promoting the production and secretion of progesterone from the corpus luteum.

- Estrogen (Es)
- Follicle-Stimulating Hormone (FSH)
- Luteinizing Hormone (LH)



To monitor the LH level and predict the right time would be essential to a success pregnancy.



This kit combined with a digital device to read the test results from the disposable test strips. With a software on your mobile phone, it can easily record one’s LH level and analyze the data to predict the suitable time for pregnancy.



Hangzhou Laihe Biotech Co., Ltd.

 Room 401-406, F1-3, Building 1, No.425 Miaohouwang Road, Xixing Street, Binjiang District, Hangzhou, 310051 Zhejiang P.R. China

 +86-571-87653090

 www.lyherbio.com

 office@lyher.com