



LYHER[®]

Drug of Abuse Test

RAPID DETECTION, EASY OPERATION, HIGH SENSITIVITY, WIDE APPLICATIONS

What is a drug test?

A drug test is a technical analysis performed to determine the presence or absence of one or more prescription or illegal drugs in your system: blood, hair, saliva, sweat, or urine. Drug tests are typically used in pre-employment screening, athletic testing, legal or forensic investigations and prescription drug misuse monitoring.

Window of detection/History of Use



Oral

Detection:1-3days

Adulteration Level:Difficult

Collection:No Notice required



Urine

Detection:2-3days

Adulteration Level:Easy

Collection:May need Notice



Hair Test

Detection Time :6 Months

Adulteration Level:Moderate

Collection:May need Notice

Applications



Pre-employment testing



Sports screening



legal or forensic investigations



Military recruitment testing and monitoring



Customs inspections



Public security anti-drug screening



Traffic police drug driving investigations



Community drug addicts screening



Monitoring for prescription drug misuse

Drug Urine/Saliva/Hair Testing Series (Colloidal Gold)



Advantages of drug hair testing compared with urine&saliva testing

1. Drugs are metabolized slower in hair, longer window of detection
2. Hair is easy to store for a long time, stable sample
3. Avoid adulteration, trusted results

Hair Pretreatment Equipment



Can handle
2 samples grinding
at the same time



Can handle
6/12 samples grinding
at the same time



Can handle
24 samples grinding
at the same time

Product Format

Drug Abuse Detection	Format and Specification	Product picture
DOA Multi-Drug one step test kit (Hairs)	Cassette 25/40Tests/Kit	
Multi-drug Test Kit (Colloidal Gold)	Strip 50/100Tests/kit Cassette 20/25/40Tests/Kit	
	cup 1Test/Kit	
	Panel 20Tests/Kit	
Saliva Combo Test Kit (Colloidal Gold)	cup 1Test/Kit	
	Cassette 10/20Tests/Kit	

Drug Hair Testing Series (Immunofluorescence)



Supporting Rapid Test Kit



FA-LF600C Hand Held Hair Drug Trace Rapid Analyzer



FA-LF100C Hair Drug Trace Rapid Analyzer



FA-LF1000C Hair Drug Trace Rapid Analyzer

Product Features

1. Rapid quantitative test

Reacting time of test kit only need 3 minutes. It could finish detection of drug concentration in hair samples of suspected drug abusers within 5 minutes.

2. Ultra high sensitivity

Minimum detection limit: 0.1 ng/mg.

3. Long test window period

Not affected by drug metabolism in the body.

4. Convenient sampling

Sampling on site, only need little hair and can effectively avoid sample fraud or transfer.

5. Complete testing items

Methamphetamine, tetrahydrocannabinol, ketamine, detect morphine, cocaine and other drug content in hair.

6. Patented technology

Exclusive patented hair lysate that quickly cleaves the surface structure of hair and extracts drugs from hair within 30 seconds.

Segmentation analysis of hair and history of drug abuse

The hair growth rate is about 1 cm per month, and the drug combined with hair will grow forward with hair instead of spreading along the hair shaft. Hair is marked as roots, ends and cut into several sections, and each section was measured separately. According to the measurement of result and the growth rate of hair, the time of drug absorption and the amount of drug use could be speculated roughly. This is the blood, urine toxicity analysis which are currently unable to do, and that is one of the reasons for the preference of toxicological analysis workers.



Test Procedure



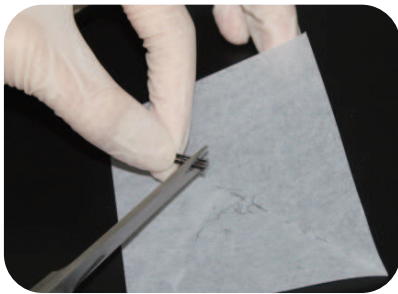
1. Remove and place the analyzer horizontally, connect power adapter, turn on the left switch and right card slot. Remove hair lysate and test cassette, let them return to room temperature



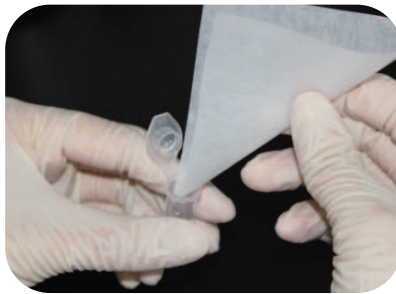
2. Remove the ID card and insert it into analyzer, click "Read ID Card" detect the test kit after finishing the reading



3. Close to scalp, cut 5 mg hairs (About 10cm each of 10 hairs)



4. Cut hair into small pieces of 1-2mm on weighing paper



5. Pour shredded hairs into a bottle containing hair lysate, cover the cap, shake for 1 minute



6. Suck supernatant of the hair lysate with a dropper, add 2 drops in reagent well



7. Insert test kit immediately into the analyzer after 3-minute reaction. Click "Test" to get drug concentration result

Result interpretation

1. The result is less than 0.1, which means **NEGATIVE**
2. The result is more than or equal to 0.1, which means **POSITIVE**.
3. The result needs read after 3 minutes and will be invalid after 5 minutes

Precautions

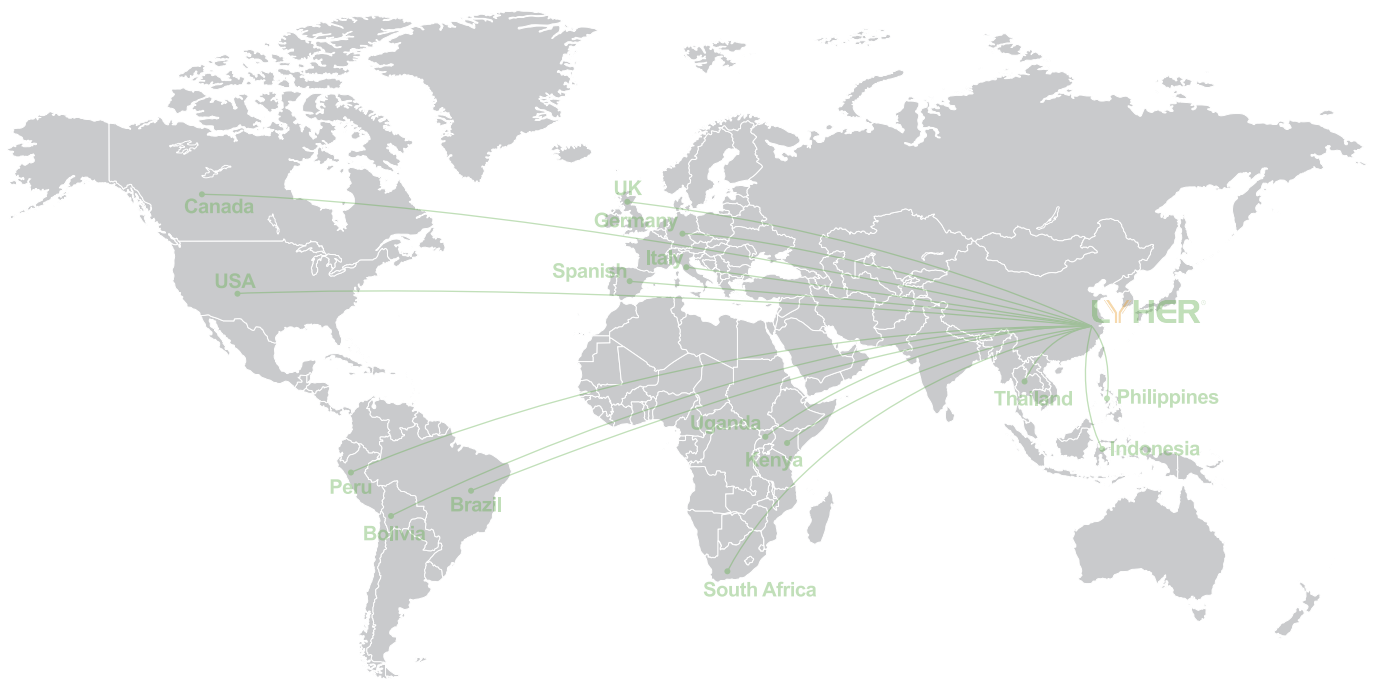
- 1) When collecting hair samples, you need to close the scalp and cut the collected hair in a clean paper bag or valve bag.
- 2) When collecting the hair of different people, wipe the scissors with alcohol cotton in the box to prevent cross-contamination.
- 3) Different batches of test kits cannot be mixed, and ID cards and test cards must not be mixed with different batches.
- 4) The tests card and its components are only applicable to the Hair Drug Trace Rapid Analyzer produced by Hangzhou Laihe Biotech Co., Ltd.

DOA Test Colloidal Gold Series					
Products	Specimen			Format	Certification
	Urine	Saliva	Hair		
Amphetamine (AMP) Test	√	√		Strip/Cassette	CE/FSC
Barbiturates (BAR) Test	√	√		Strip/Cassette	CE/FSC
Benzodiazepines (BZO) Test	√	√		Strip/Cassette	CE/FSC
Buprenorphine (BUP) Test	√	√		Strip/Cassette	CE/FSC
Cocaine (COC) Test	√	√	√	Strip/Cassette	CE/FSC
Cotinine (COT) Test	√	√		Strip/Cassette	CE/FSC
Fentanyl (FYL) Test	√	√		Strip/Cassette	CE/FSC
F-Ketamine (F-KET) Test	√	√		Strip/Cassette	CE/FSC
Ketamine (KET) Test	√	√	√	Strip/Cassette	CE/FSC/CFDA
Synthetic Cannabinoid (K2) Test	√	√		Strip/Cassette	CE/FSC
Synthetic Cannabinoid (K3) Test	√			Strip/Cassette	CE/FSC
Synthetic Cannabinoid (K4) Test	√			Strip/Cassette	CE/FSC
Morphine (MOP) Test	√	√	√	Strip/Cassette	CE/FSC/CFDA
Methamphetamine (MET) Test	√	√	√	Strip/Cassette	CE/FSC/CFDA
Methadone (MTD) Test	√	√		Strip/Cassette	CE/FSC
Ecstasy (MDMA) Test	√		√	Strip/Cassette	CE/FSC
Methcathinone (MCAT) Test	√			Strip/Cassette	CE/FSC
Opiate (OPI) Test	√	√		Strip/Cassette	CE/FSC
Oxycodone (OXY) Test	√	√		Strip/Cassette	CE/FSC
Phencyclidine (PCP) Test	√	√		Strip/Cassette	CE/FSC
Propoxyphene (PPX) Test	√			Strip/Cassette	CE/FSC
Carisoprodol (SOMA) Test	√			Strip/Cassette	CE/FSC
Marijuana (THC) Test	√	√	√	Strip/Cassette	CE/FSC
Tricyclic Antidepressants (TCA) Test	√			Strip/Cassette	CE/FSC
Tramadol (TRA) Test	√			Strip/Cassette	CE/FSC
Multi-drug Test (MOP/MET)	√	√	√	Cassette/Panel/Cup	CE/FSC/CFDA
Multi-drug Test (MOP/THC)	√	√	√	Cassette/Panel/Cup	CE/FSC/CFDA
Multi-drug Test (MOP/MET/KET)	√	√	√	Cassette/Panel/Cup	CE/FSC/CFDA
Multi-drug Test (MET/KET/MDMA)	√	√	√	Cassette/Panel/Cup	CE/FSC/CFDA
Multi-drug Test (MOP/MET/THC)	√	√	√	Cassette/Panel/Cup	CE/FSC/CFDA
Multi-drug Test (MOP/MET/KET/MDMA)	√	√	√	Cassette/Panel/Cup	CE/FSC/CFDA
Multi-drug Test (MOP/MET/KET/MDMA/THC)	√	√	√	Cassette/Panel/Cup	CE/FSC/CFDA
Multi-drug Test (MOP/MET/KET/MDMA/THC/COC)	√	√	√	Cassette/Panel/Cup	CE/FSC/CFDA
Multi-drug Test (AMP/MOP/MET/THC/COC/BZO/SOMA)	√	√	√	Cassette/Panel/Cup	CE/FSC

Different combination on customizing demand is possible !

DOA Test Fluorescence Immunochromatography Assay				
Products	Specimen		Format	Certification
		Hair		
Benzodiazepines (BZO)		√	Cassette	CE
Cocaine (COC)		√	Cassette	CE
Cotinine (COT)		√	Cassette	CE
F-Ketamine (F-KET)		√	Cassette	CE
Ketamine (KET)		√	Cassette	CE
Synthetic Cannabinoid		√	Cassette	CE
Morphine (MOP)		√	Cassette	CE
Methamphetamine (MET)		√	Cassette	CE
Ecstasy (MDMA)		√	Cassette	CE
Methcathinone (MCAT)		√	Cassette	CE
Opiate (OPI)		√	Cassette	CE
Oxycodone (OXY)		√	Cassette	CE
Phencyclidine (PCP)		√	Cassette	CE
Marijuana (THC)		√	Cassette	CE
DOA Multi-Drug Test		√	Cassette	CE

Different combination on customizing demand is possible !



Hangzhou Laihe Biotech Co., Ltd.

Add.: Room 401-406, F1-3, Building 1, No.425 Miaohouwang Road,
Xixing Street, Binjiang District, Hangzhou, 310051 Zhejiang P.R. China

Tel: +86 571 8765 3090

E-mail: office@lyher.com

